

SWIR Camera

General Data

Input Voltage: 12Vdc
Power: 20W
Mass: 1.5kgs

Environmental Data

Temperature Range
Operating: -30°C to +60°C
Storage: -40°C to +70°C
Shock: Details on request.
Vibration: Details on request.

Mechanical Dimensions

Round mono-body camera.
Length: 223 mm
Diameter: max 90 mm

Optical Data

Lens fitting: C-mount (custom fittings on request)
Output: Digital via GigE
CCD Type: InGaAs sensor operating in the wavelength from 900 nm to 1700 nm
or
from 1200 nm to 2200 nm

CCD Format: 2/3 inch
Active Pixels: 320 (H) x 256 (V)

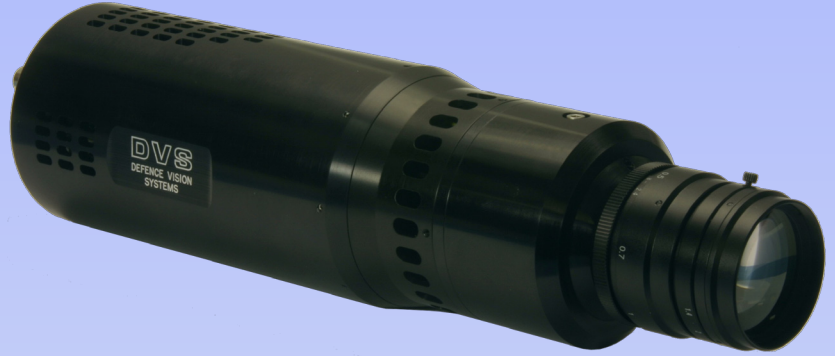
OR
CCD Type: InGaAs sensor operating in the wavelength from 900 nm to 1700 nm

CCD Format: 1 inch
Active Pixels: 640 (H) x 512 (V)

Image Readout: Digital via Camera Link (see options)
Analogue – CCIR (see options)

Electrical Data

Connectors: Power – 4-way Hirose HR10
Control – GigE



OPTIONS:

Manual Control: Manual control of camera functions using an on screen menu.

Other Options

- * Customer specific housing.
- * NIR lenses available on request.
- * Analogue output – available on request.
Alternative digital interface – Camera Link available on request



UK Eastern Coastal Region – Night Conditions

DVS Cameras

* Designed and manufactured in the United Kingdom

* Built to defence standards for Shock, Vibration, Temperature

Note: All image intensified cameras are subject to UK export licence regulation

DVS reserve the right to modify the data outlined without prior notice (E & OE)

DVS
Tel: +44(0) 1580 881199 Fax: +44(0) 1580 880910
Millham, Mountfield, Robertsbridge, East Sussex
TN32 5LA, UK
info@dvsml.com